



*Little Bits of
Sunshine Daycare*



WELCOME PACK

This is a little information packet for parents that will help put your mind at ease, as we know how difficult it can be to choose the right daycare for your child. The perfect environment for a child's development is of utmost importance and Little Bits of Sunshine Daycare intends to offer a premium and friendly service.

We take pride in our work and strive to make our children the best they can be. Our team are fully qualified and work to provide a high standard of childcare.

482 Judy Con Dr. 45255
Cincinnati, OH
Open 7:30am–5:30pm Mon-Fri
513-479-0630

SunshineDaycare53@gmail.com

[Little Bits of Sunshine Daycare](#)

About Our Service


- Will care for up to 12 children
- Open from 7:30am – 5:30pm Monday – Friday
- Flexible childcare service for babies from 6 months old
- Breakfast and Lunch provided
- Conveniently located right off 275 exit 65
- Spacious outdoor area
- Child Development Associate (CDA) trained

Our Aim

- To create a happy and safe environment in which our children can grow
- To provide high quality childcare and education
- To create an environment that is secure, safe and welcoming
- To work in partnership with the parents in their child's development
- To offer a service that promotes equality and diversity


Mealtime

- Well-Balanced breakfast around 10 am and lunch around noon
- Varying meals to test new things
- Structured to encourage table manners



Baby Room /Nap Room

For babies from 6 months to 12 months, our baby room is a warm, nurturing space where our littlest stars have a chance to learn and grow. Our baby room can hold up to 4 babies and is run by a fantastic team of highly experienced and qualified daycare teachers. The activities planned in this room include reading to the babies, tummy time, practice standing, and other fine motor skill development. This room also doubles as the Nap Room for the older children where they each are provided a pillow and blanket and sleep in either a cot or pack and play.



Active Room / Outside Play Area

Our Active Room is a bright and stimulating environment for the little learners to explore. It has a lot of different types of toys for the kids to explore their curiosity. They have access to Disney characters, construction table, kitchen set, learning table, costume area, a climber, and much more. The Outside Play Area has a full wooden playset inside of a cedar filled area. Along with a smaller swing set for our younger children. There is also many cars and smaller toys for them to play with in our secluded quite backyard.



Living Room

Our Living Room is where we have our structured group activities for everyone to enjoy together. These activities may include yoga, dances, Floor is Lava, block building etc. We encourage independence in this area by giving the children responsibility and individual tasks. The Living room is also changed termly to reflect our topics.

FAQ's

How does the settling in process work?

At Little Bits of Sunshine Daycare, we pride ourselves in knowing the importance of every child having a good settling-in period. We understand how difficult this process can be, for both the child, and for the parents. We encourage a tour for every child. During this session, the parent can stay at the setting with the child, meet their child's Daycare teacher, and discuss their child's personality, their routine, their likes and dislikes etc. We have an open-door policy and so we encourage you to talk to us about any worries you have regarding the settling-in period for your child. Our teachers adopt a very personal approach to the service and we offer regular phone calls or txt messages to keep you updated on your child's progress.

What does a typical day look like at Little Bits of Sunshine Daycare?

- Drop off is between 8am and 9am.
- Breakfast is between 9:45 and 10:00 am for all children that eat solids and puree.
- After breakfast we have free play until around 11:00 - 11:30
- Between 11am and noon we will either go outside to the playset or have some structured play. For example: puzzles, reading books, kinetic sand, coloring, yoga etc.
- At noon we have lunch for all the children that eat solids. Nap time is immediately after.
- Everyone lays down for a nap and wake up normally between 2:30 and 3:00.
- We have either outside time or free play in the playroom as we get ready for pickup
- Pickup is between 3:30 and 5:30

How will I know what my child has been up to at Little Bits of Sunshine Daycare?

Your child's teacher will document information about your child's day on Lillio.

Lillio is an app that includes:

- What your child has eaten and how much
- When your child had a nap and how long for
- All of your child's diaper changes
- How settled they have been during the day
- Activities they have taken part in
- Any additional messages

What Can my Child bring to Daycare?

- We encourage parents to leave all toys and snacks in the car or at home. We have plenty of toys for everyone and provide both meals so it makes it fair for everyone.
- A lovey or binky is perfectly fine as well as blankets and pillows for naptime.
- All children have shoes (preferably gym shoes) and clothes they can run in and get a little dirty since we go outside quite often. Please no belly shirts or dresses without shorts under.

What if my child is unwell?

If your child is running a fever or is very ill, we will first attempt to contact the child's parents. If we are unable to contact parents, we will then attempt to reach the emergency contacts provided within the child's registration form. If your child is running a fever they will need to stay home 24 hours after the fever breaks. If your child has prescribed medication to take throughout the day, the parent/guardian who drops the child off at Little Bits of Sunshine Daycare must complete and sign a medication form. Please note that if your child does not attend their session due to illness, you must still pay for your child's space at the Daycare.

How do I discuss my child's development?

We will discuss what you would like to see your child work on during our tour. Once we know what to work on we will keep you updated regularly either in Person or via the Lillio application. Our Leader being CDA trained also implements a range of activities and geared towards your child's development. In addition to this, we have an open-door policy whereby we encourage our parents to reach out and chat with us about their child's needs and/or any concerns at any time.

When is the Daycare open?

Little Bits of Sunshine Daycare is open from 8am-5:30pm, Monday thru Friday, for 52 weeks of the year. With a few exceptions.

We do close for the following days- New Year's Eve & New Year's Day, Christmas Eve & Christmas day, Thanksgiving Eve & Thanksgiving Day, May 17th and May 25th, July 4th, and Memorial Day.

We take 2 vacations a year. 1 spring/summer and 1 fall/winter vacation. We ask parents pay ½ their normal tuition those weeks. Plenty of time will be given to all.

How do I arrange childcare if I work different shift patterns every week?

We fully understand how difficult it can be to arrange childcare around your work patterns and we try to be as accommodating as possible. At the tour or over the phone we will discuss your shift patterns and assess the availability of the days your child will need. If you are a Nurse or Doctor with a rotating schedule, we allow you to rotate between the days we have availability. You just have to pay the number of days a week you will need (minimum of 3).

How do I pay my childcare fees?

On our website you will need to create an account. If you have any questions on how to do so, please reach out to us and or look at the setup guide on our website. Once the account is setup, we have different packages for tuition depending on age and how many days a week you will be needing care. After you select your package, you will be charged at the time of setup to verify the card. Then weekly automatically until you or we cancel the package. We ask that payments are made the week prior to care.

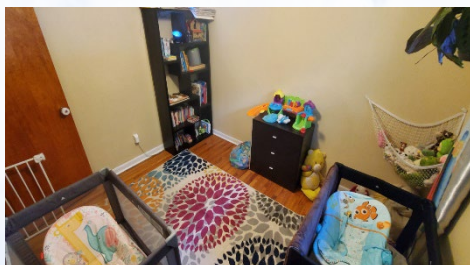
Why should you pick us?

Excellent care - We do this because we love it not because we have to. I believe this may be why we take so much pride in giving the best care possible. As well as continue pursuing further education to make sure all the kids are the best they can be!



An at home setting- We know that transitions can be difficult. We believe going from one house to another is much less shocking for the children than coming into an industrially lit facility. Also, our smaller size allows us to focus on each child more than most.

Facilities – The building was renovated for purpose in 2021. The setting was fitted with a new playroom and outdoor play area which includes a new playset and jungle gym. We have a vast range of toys and educational tools. The outdoor area consists of a grass area and a cedar area. A fantastic playset allows the children to engage in imaginative play in an outdoor environment.



Training – The Adults are all CPR Certified. AS well as the Director being Child Development Associate (CDA) trained and prior certifications in culinary and SERV safe.